

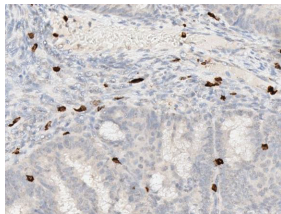
Case Study: RESEARCH PATHOLOGY 2

Research Question

What is the impact of weight loss on the endometrial cancer tumour microenvironment?

Our Approach

Quantification of CD3+ and Cd8+ T cell infiltration and PD-L1 expression in serial endometrial biopsies as women lost weight following metabolic surgery, vertical sleeve gastrectomy (VSG).



Resulting Publication: Dyck L et al. Suppressive effects of the obese tumor microenvironment on CD8 T cell infiltration and effector function. *J. Exp. Med.* (2022) Vol. 219 No. 3

Caption:
Quantification of CD8+ T cell infiltration

Expertise:

We offer unique expertise and advice for academic and commercial clients to perform immunohistochemistry studies and digital pathology with services spanning the research pathway from antibody optimisation to image annotation and quantitative/spatial analysis.



Contact details:
Prof. Aurelie Fabre
Director of Research Pathology
E: afabre@svhg.ie

Testimonial

“The Research Pathology Core is an essential resource for translational research. The staff make the whole process of experiment design, antibody optimisation, training, data acquisition and preparation of publication ready images very straightforward”.

Donal Brennan MB, MRCOG, FRCPI, PhD

*UCD Professor of Gynaecological Oncology
UCD School of Medicine*

Consultant Obstetrician and Gynaecological Oncologist

*Mater Misericordiae University Hospital, the National Maternity Hospital
and St Vincent's University Hospital*